

Community At-A-Glance

Assisted Living & Assisted Living Memory Support Care
SpiriTrust Lutheran®, The Village at Sprenkle Drive

Community offerings:

- 22-acre campus with walking trails
- Outdoor patios and gazebos
- The Bean coffee shop and Rachel & Reuben bistro
- Card and game rooms
- Gathering room
- Library
- Hair salon & massage suite
- Fitness room
- Tobacco-free environment
- Skilled care & rehab center
- WiFi Internet

Elmtree Assisted Living Neighborhood offerings:

- 26 apartments
- Outdoor patio
- Country kitchen with breakfast bar
- Dining area
- Great room with fireplace
- Library and Computer Lab
- Spa
- Laundry room
- Hobby Center



Oaktree Memory Support Care Neighborhood offerings:

- 12 apartments in each of 2 households
- Secured environment
- Enclosed courtyard with walking paths
- Country kitchen with breakfast bar
- Soothing colors, tactile decorations and furnishings
- Specialized programming and enrichment stations
- Bathing spa
- Great room with fireplace
- Personal curio cabinets

Community Life

Assisted Living at SpiriTrust Lutheran®, The Village at Sprenkle Drive

Fitness & Wellness

- Tai chi
- Chair yoga
- Healthy Steps
- Pet therapy
- Aromatherapy

Social Time

- Brain games / trivia
- Board games / Dominoes
- Bocce ball
- Bingo
- Puzzles
- Karaoke
- Science for seniors
- Wii games
- Shuffleboard

Outings & Excursions

- Local farmers markets
- York Fair
- Revolution baseball games
- Apple Harvest Festival
- Grocery shopping

Clubs & Groups

- Ladies' Chat
- Men's Chat
- Scrapbooking
- Shuffler's Card Group
- Arts & crafts
- Computer class
- Book Club
- iPad class
- Coffee & Conversation
- Garden club

Art Enthusiasts

- Clay art
- Creating writing
- Sand art
- Flower arranging
- Painting class
- Crocheting

Cultural Arts

- Movie night
- In-house performing arts
- Music Variety Show

Dining & Nutrition

- Happy Hour
- Wine & Cheese
- Dining Courier
- Chef's Pairing Dinner
- Ladies' Breakfast
- Men's Breakfast
- Afternoon Tea
- Cooking class
- Healthy Choices Talks

Spiritual Inspirations

- Daily devotionals
- Chicken Soup for the Soul®
- Worship services
- Bible study

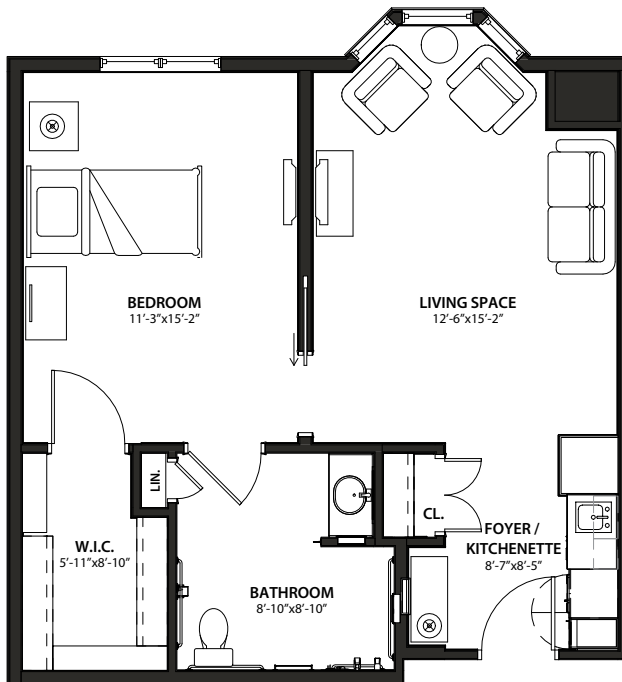
Committee & Volunteer Opportunities

- Social & Recreational Committee
- Resident Council
- Food Committee

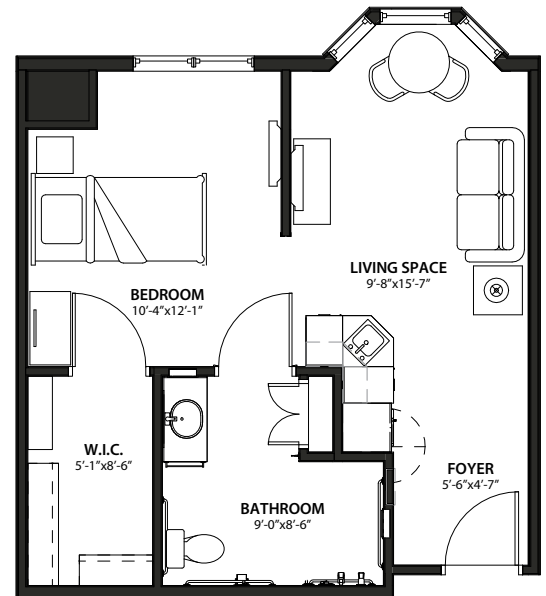
Assisted Living Floorplans & Features

SpiriTrust Lutheran®, The Village at Sprenkle Drive

Elmtree Assisted Living Apartments



One Bedroom, 600 sq. ft.*



Studio, 436 sq. ft.*

Residence features:

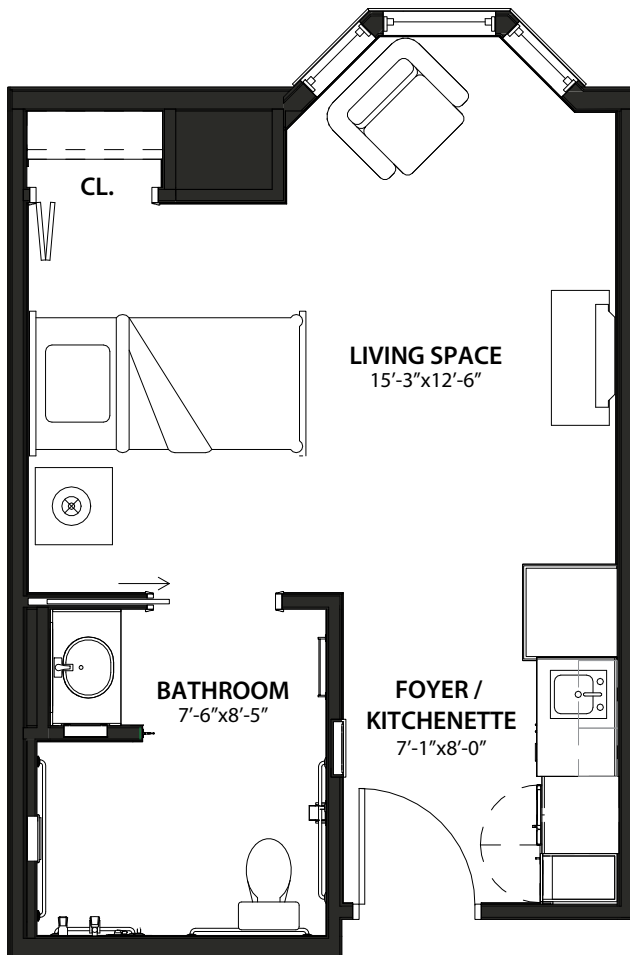
- Tea kitchen with microwave and refrigerator
- Full bath with European shower and assistance bars
- Emergency call system
- Individually controlled heating and air conditioning
- Two separate phone lines
- Window blinds and decorative valance
- Large walk-in clothing closet
- Flat screen television
- Bedroom furniture suit

*Architect's floor plans are approximate and not to scale

Assisted Living Memory Support Care Floorplans & Features

SpiriTrust Lutheran[®], The Village at Sprenkle Drive

Oaktree Memory Support Care Apartments



Residence features:

- Tea kitchen with microwave and refrigerator
- Full bath with European shower and assistance bars
- Emergency call system
- Individually controlled heating and air conditioning
- Window blinds and decorative valance
- Bedroom furniture suit
- Large walk-in clothing closet
- Way-finding curio cabinet

*Alcove Apartment, 331 sq. ft.**

**Architect's floor plans are approximate and not to scale*

Steps to Residency

Assisted Living and Assisted Living Memory Support Care SpiriTrust Lutheran[®], The Village at Sprenkle Drive

Our goal is to make moving to the Assisted Living Residence at The Village at Sprenkle Drive as easy as possible for everyone involved, as we realize this can be a stressful time in your life.

1. Complete an application. From this application, we will process the information to determine if you meet the financial requirements and which style of accommodations you would be eligible for.
2. We will provide you with a Medical Evaluation Form to take to your personal physician. Your physician will need to complete the evaluation in full and return it as soon as possible.
3. In addition to your physician completing the Medical Evaluation Form, our Director of Resident Care will schedule a time to complete an Assessment-Support Plan. If the prospective resident is currently in the hospital or nursing home, this meeting can also be held there, depending upon location. In addition to being required by the state, completing this document is a wonderful opportunity for us to learn more about your preferences and discuss your personal service needs.
4. After the meeting with our Director of Resident Care, your application (with supporting documentation outlined on the form), Medical Evaluation Form and pre-admission Assessment-Support Plan will be reviewed. At this time, you will be notified if your application has been approved. This is not a lengthy process. If necessary, move-in can occur within 24-hours of your first inquiry.
5. Establish a move-in date. Your date of occupancy should occur within 7 business days of notification of acceptance or accommodation readiness by The Village at Sprenkle Drive, unless pre-approved by the community.
6. Schedule a date prior to move-in to meet with the Retirement Counselor to sign your Residency Agreement
7. On or before day of move-in, provide any remaining paperwork and meet any outstanding financial obligations for the month. The Retirement Counselor will provide you with this amount prior to move-in. We invoice for services at the beginning of the month for upcoming room and board charges. The amount due will be pro-rated based on the remaining days in the month.